

## **Setting Up Your Computer for Remote Desktop (EzRemote)**

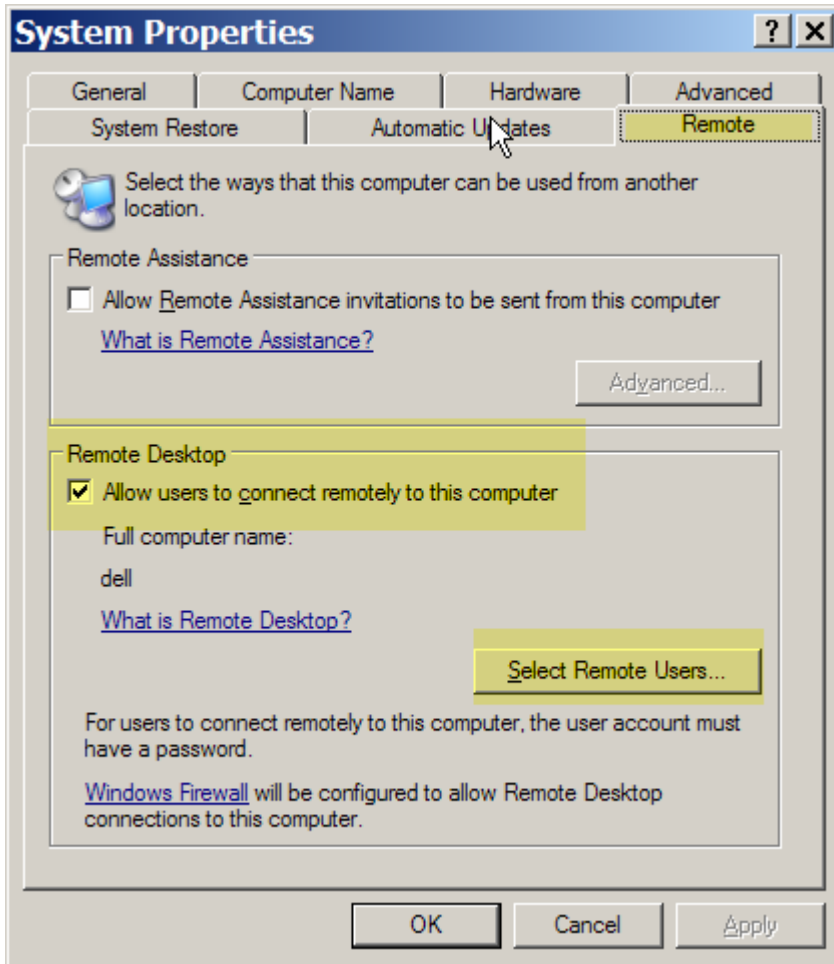
To use Remote Desktop, you will need to have Windows XP Professional or Windows Media Center. Windows XP Home does not include the Remote Desktop functionality. The following guide will help you set up Remote Desktop and make it easy to access your computer from outside your home.

Overview:

- 1) Enable Remote Desktop on your computer
- 2) Give your home network an easy-to-remember name
- 3) Make sure your Remote Desktop computer “stays put”
- 4) Configure your firewall to Allow RDP
- 5) Make sure you can reach your Remote Desktop computer from the outside

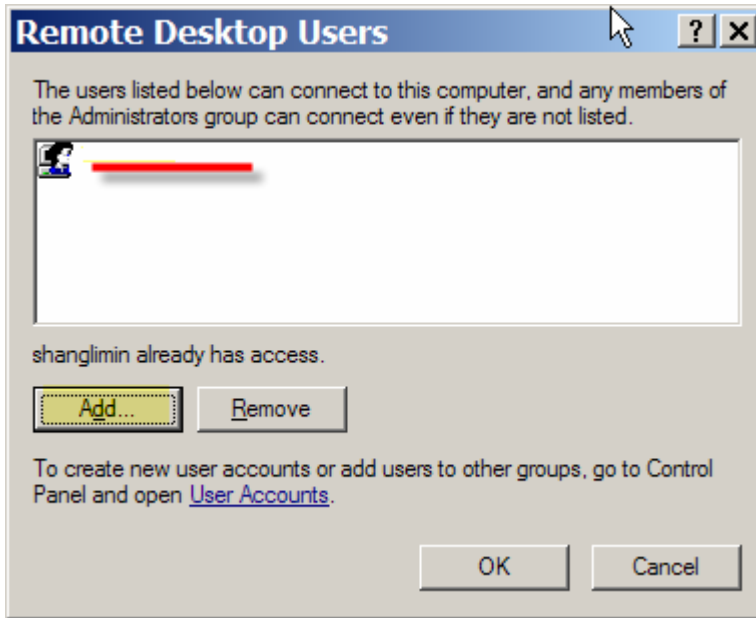
### **Step 1. Enable Remote Desktop on your computer**

- 1) “Start”-> right click on “My Computer”-> “Properties
- 2) Click the Remote tab
- 3) Check “Allow users to connect remotely to this computer”



If you are the administrator of the computer and use a password to log in, you're already set up for Remote Desktop. However, you may wish to create an additional user account specifically for use with Remote Desktop and your smartphone. This special account can be optimized for small-screen display without affecting the appearance of your usual accounts.

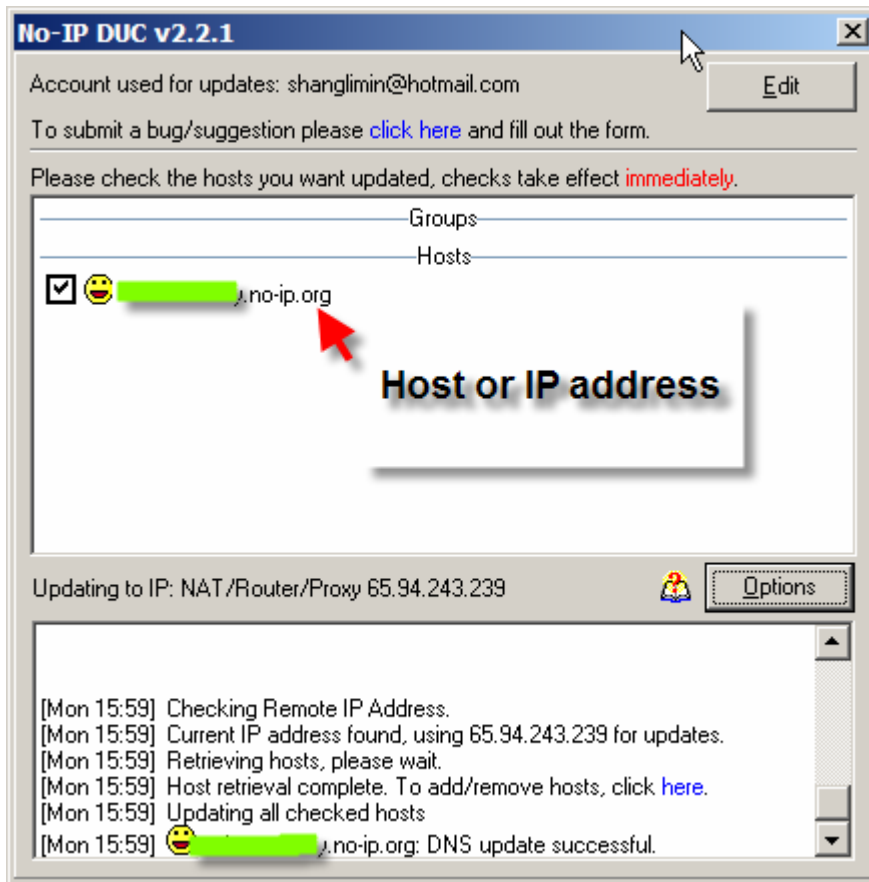
Click on "select remote users" to add a user account. The user name and password should be the same one used in EzRemote (note: the user must have a password in order to use RDP)



## Step 2. Give your home network an easy-to-remember name

This free software enables you to give your home network a friendly address (such as bob.no-ip.org) rather than having to remember the numbers like 123.45.67.89. Also, if your ISP assigns addresses dynamically, the name will always point to the current IP address of your home network. This step isn't strictly necessary, but highly recommended.

Register, download and install NO-IP DUC. ([www.no-ip.org](http://www.no-ip.org)) and follow the instruction. If you've done everything correctly, you will see:



Host or IP address should be in the hosts lists. (i.e., computername.no-ip.org).

### **Step 3. Modify your computer to use a static IP address instead of DHCP**

Most home routers use DHCP to dynamically assign an (internal) IP address to your computer. This address can change when you reboot your computer, which will prevent outside connections from reaching it. You can assign a “static” IP address either by configuring your router, or by configuring your computer, or both. If your router can reserve an IP address for a given device, you may not need to follow these instructions:

1. “start”->”run”->”cmd”->”ok” and input “ipconfig”

```
C:\WINDOWS\system32\cmd.exe
C:\Documents and Settings>ipconfig
Windows IP Configuration

Ethernet adapter Local Area Connection 2:

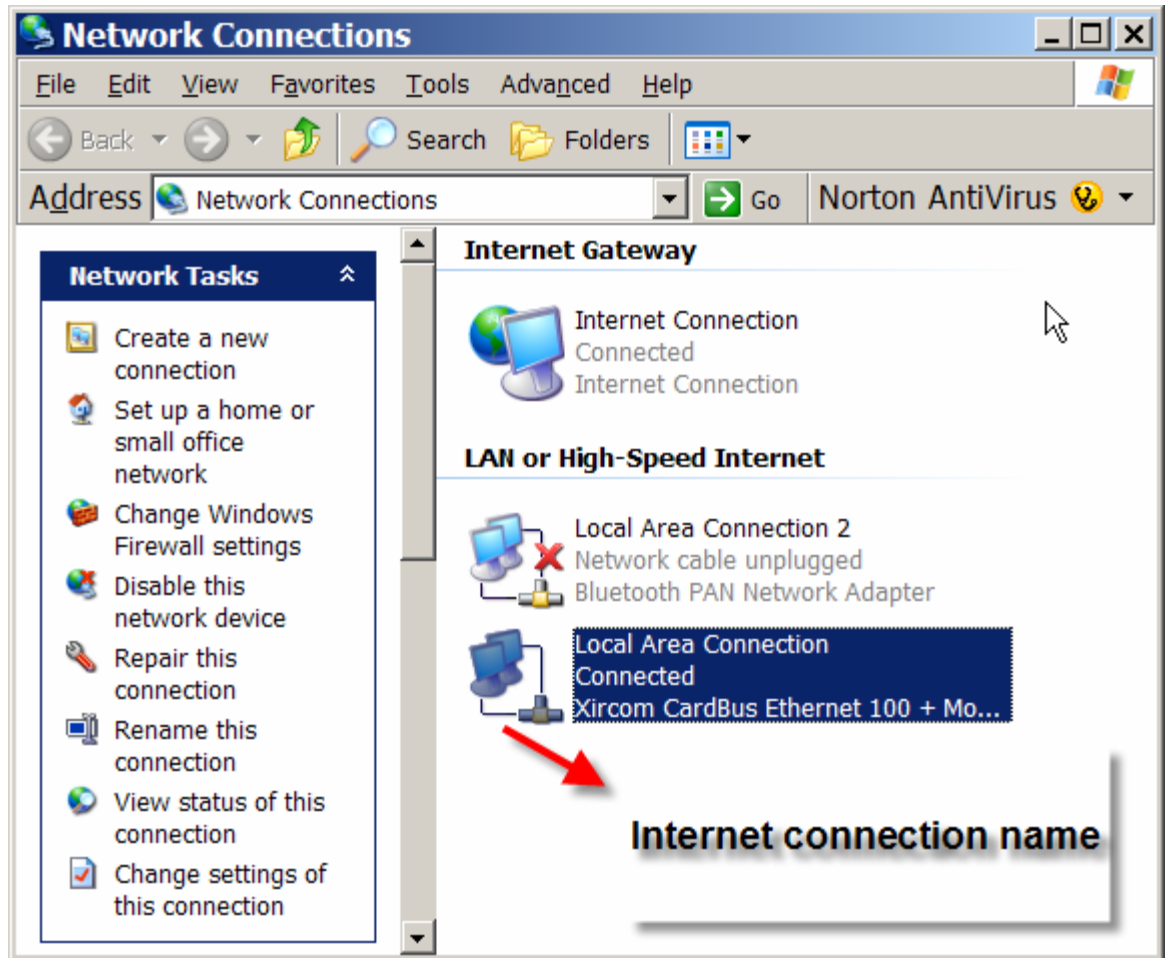
    Media State . . . . . : Media disconnected
Ethernet adapter Local Area Connection:
    Connection-specific DNS Suffix . :
    IP Address. . . . . : 192.168.2.66
    Subnet Mask . . . . . : 255.255.255.0
    Default Gateway . . . . . : 192.168.2.1

C:\Documents and Settings>_
```

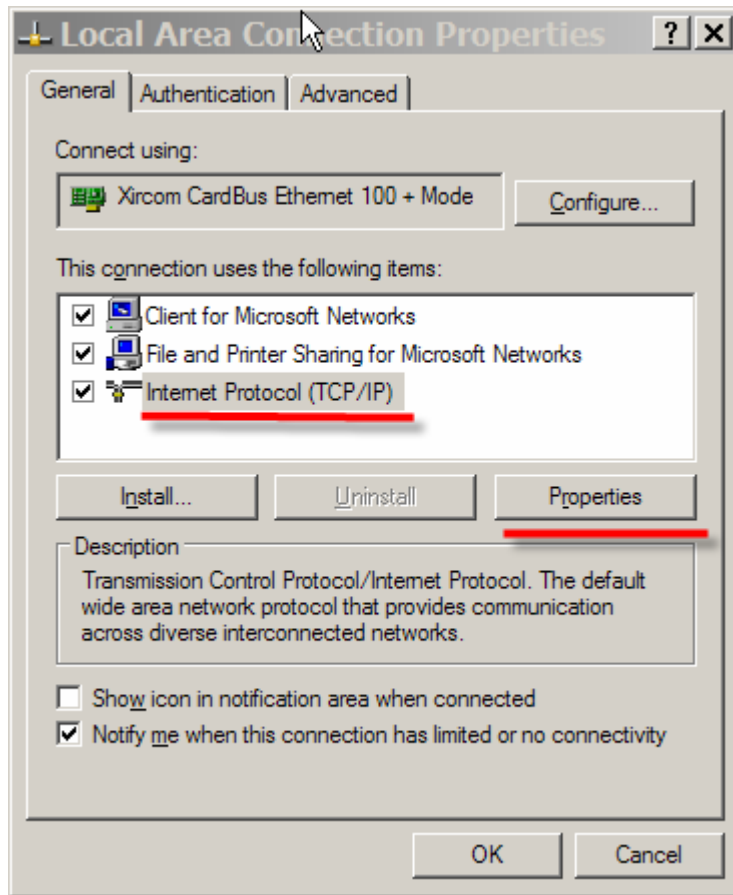
**Internet connection name**

**IP address of your router. you should change your configuration according to this value(i.e.,192.168.1.xxx, instead of 192.168.2.xxx)**

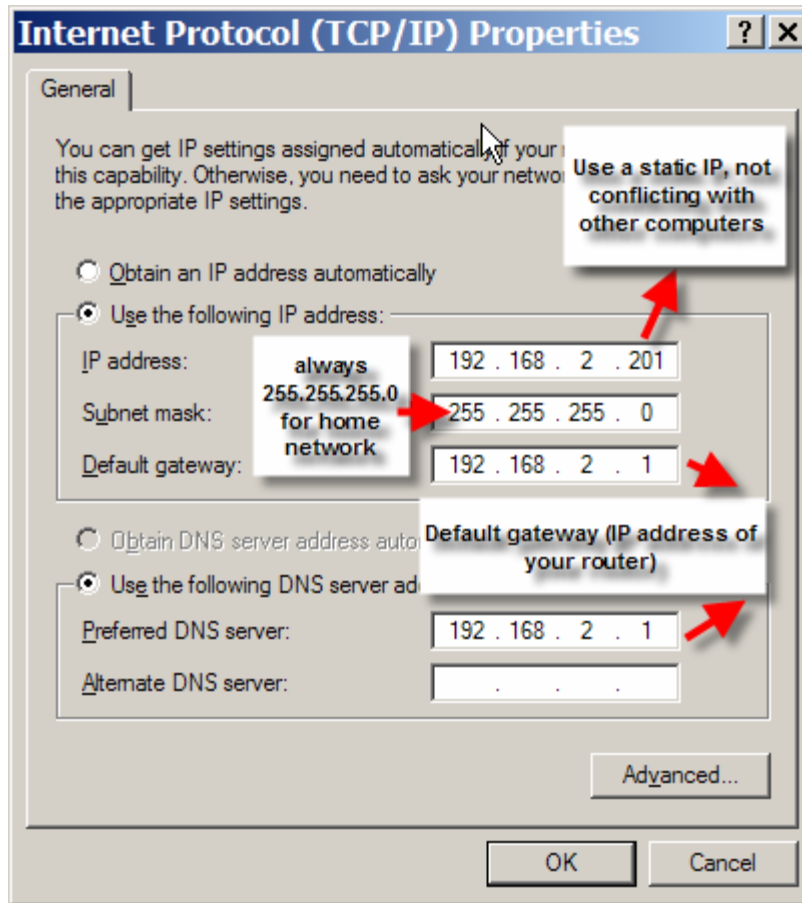
2. “start”-> right click on “My Network Places” -> “Properties”



3. Right click on your Internet connection name (local Area Connection in this example) -> "Properties"
4. Select "Internet Protocol (TCP/IP)"->Properties



5. Select "Use the following IP address" and fill in the values



#### Step 4. Configure your firewall to Allow RDP

Remote Desktop uses TCP port 3389; therefore, you'll have to open this port on your firewall. If you use another third-party firewall, consult the manual for opening its port.

If you use firewall in Windows XP, follow these steps on the remote machine (the machine you want to connect to using Remote Desktop):

- 1) Open the Network Connections folder (located in the Control Panel).
- 2) Right-click on the firewall connection and select Properties.
- 3) Click the Settings button on the Advanced tab.
- 4) Check the Remote Desktop box on the Services tab.
- 5) Close all of the dialog boxes.

#### Step 5. Port Forwarding

The final step is to enable connections from outside your network to connect to the computer running Remote Desktop. Remote Desktop runs on port 3389, so you need to tell your router that anytime someone “calls in” on that port that they are forwarded to the correct computer. This is handled by your router’s web

interface. An example is shown below; for other brands, see <http://www.portforwarding.com>.

the IP address of your router (default gateway)

Server

configure the Barricade as a virtual server so that remote users accessing services such as the Web or FTP at your public IP address can be automatically redirected to local servers configured with private IP addresses. In other words, depending on the public port number, the Barricade redirects the external service request to the appropriate server (located at another IP address).

Well known services : -- select one --

Schedule rule : (00)Always Copy to ID --

ID	IP Address	Public Port/s	Private Port/s	Data Type	Enable
1	192.168.2.201	3389	3389	TCP	<input checked="" type="checkbox"/>
2	192.168.2.			TCP	<input type="checkbox"/>

#### ACKNOWLEDGMENTS:

Special thanks to Bill Marriott for kindly proofreading the document and making it much better than the original version.

@ Copyright 2006, <http://www.pdaeveryday.com>